

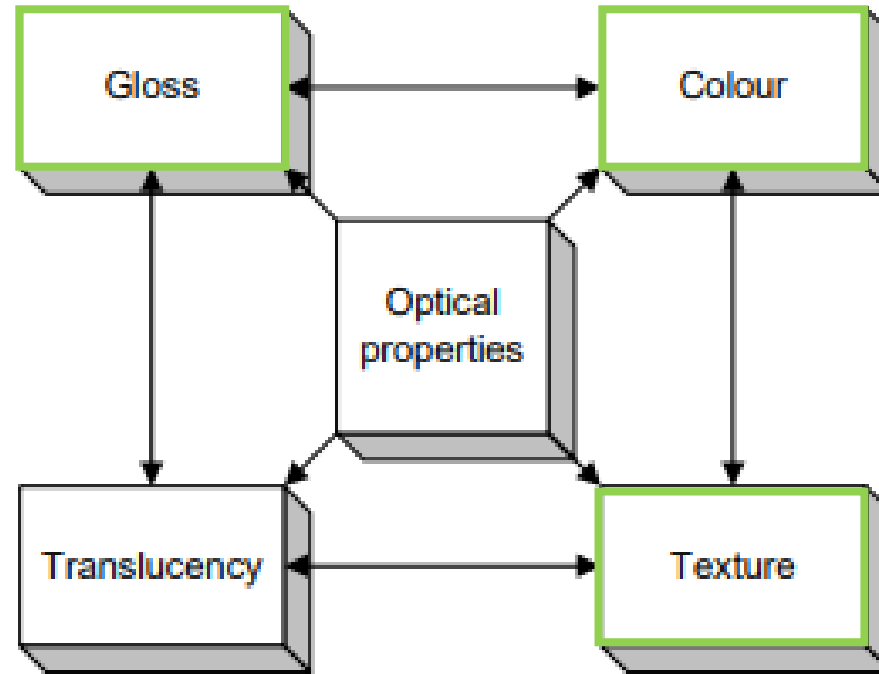
The logo features a stylized 'C' with a blue-to-purple gradient, containing the letters 'TT' in white. To the right, the text 'Coatings Trends & Technologies' is in bold black, and 'SUMMIT' is in bold blue.

**Coatings Trends
& Technologies
SUMMIT**

New surface appearance
measurements to match consumer
perception



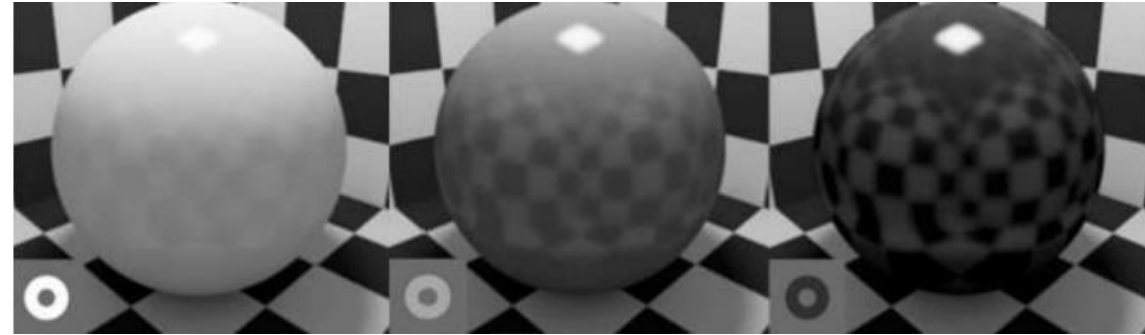
Why Surface Appearance Matters



CIE- A Framework for the Measurement of visual appearance

Multiple aspects of a surface appearance influence the consumer perception of quality and greatly influence purchasing choice

Challenges in Traditional Measurement

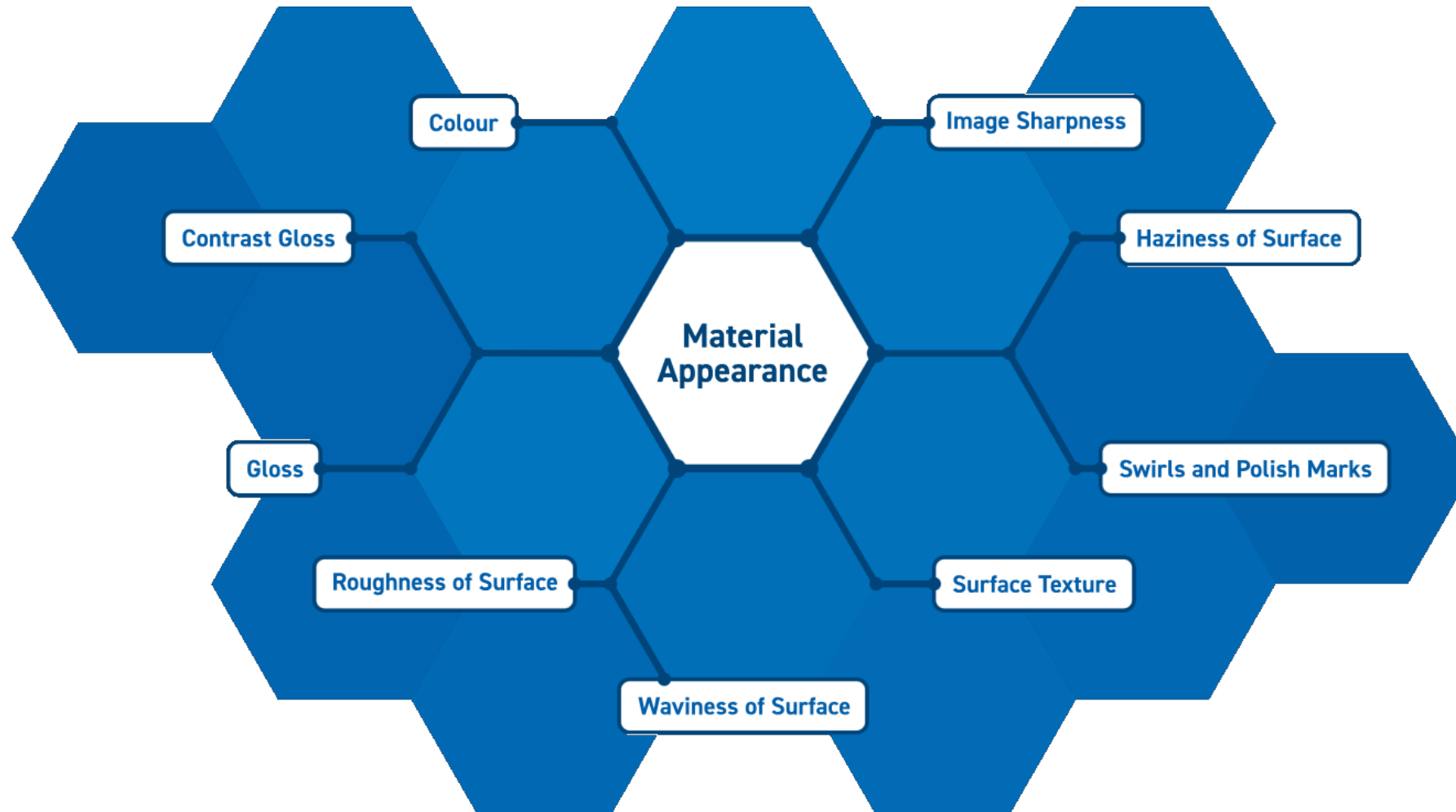


(Ferwarda, Pellacini and Greenberg, 2001)

EQUAL readings but DIFFERENT perception.....

Traditional meters capture limited information about a surface and do not always correlate with what we see

Measurement Possibilities



Flexible light sources and dual cameras- an Instrument Vision System that quantifies multiple aspects of surface appearance

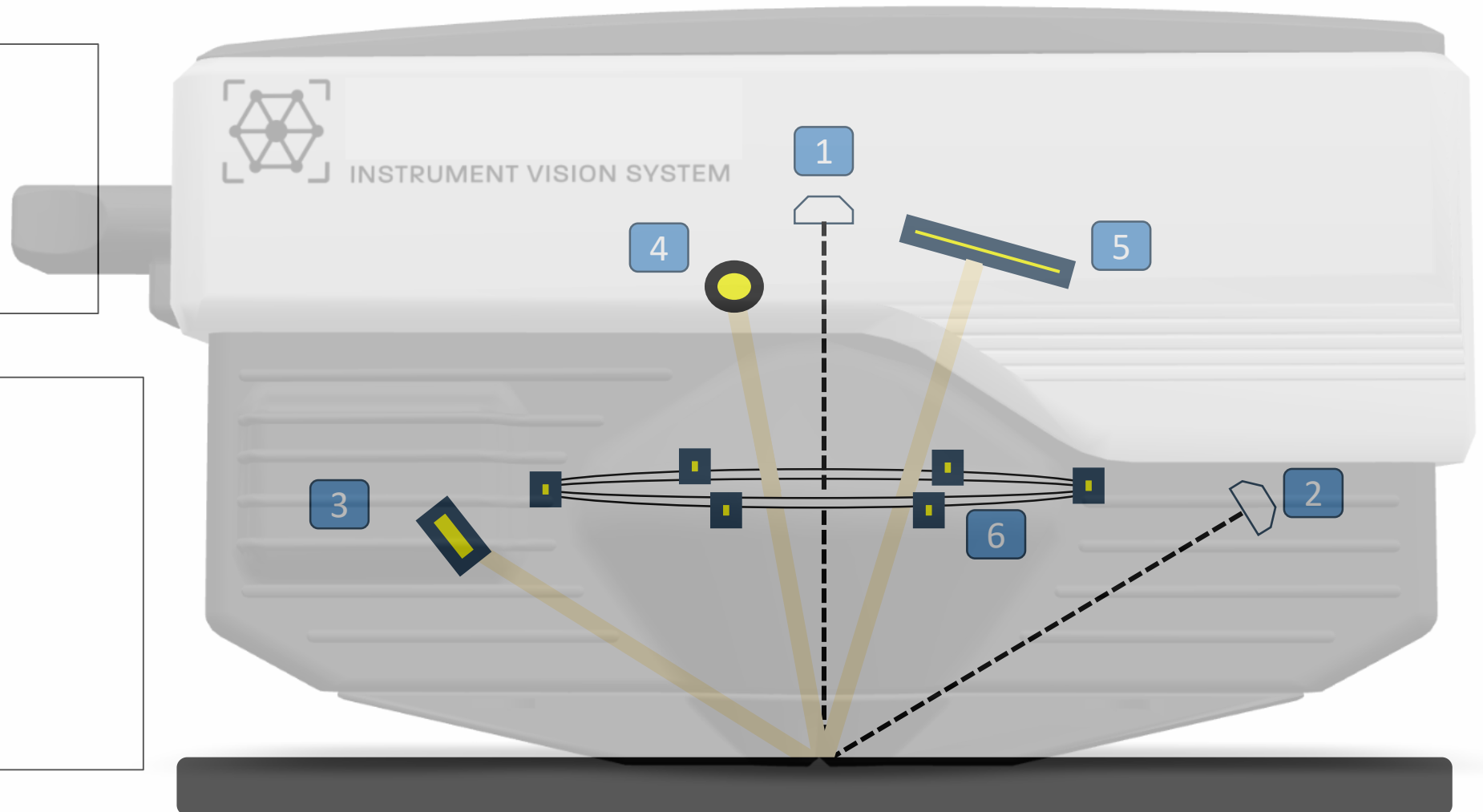
Novel Technology Overview

Key

1. 0° Observer Camera
2. 60° Gloss Camera
3. 60° Gloss light Source
4. 10° Spot source
5. 15° Linear source
6. 45° Ring sources (x6)

Imaging Specifications

- Raw surface image: 25x19 mm
- Processed image size
 - Sparkle: 10x10 mm
 - Gloss: 12x12 mm
 - Topo: 15x15 mm
- Surface Resolution: 10 $\mu\text{m}/\text{pixel}$

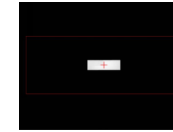


The sensor can be used with a laboratory PC, a tablet for mobile inspection or as part of an inline or cobot measurement cell

What can new technology measure- Complete



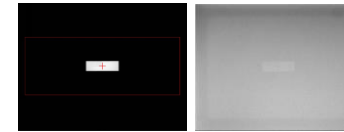
Glossiness c.



Standard Gloss

Traditional gloss for backwards compatibility

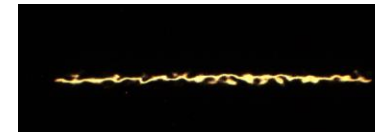
- Fully compliant with ISO/ASTM standard



Visual Gloss

Consumer perceived gloss- “contrast gloss”

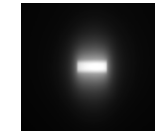
- Useful for designers



Waviness/Orange peel

Perception based measurement of orange peel

- High impact on perceived quality



Sharpness & DOI

Key to appearance of high gloss coatings

- Highly sensitive to micro texture



Haze, Scratches and Holograms

Quantify effect of polishing, ageing and damage



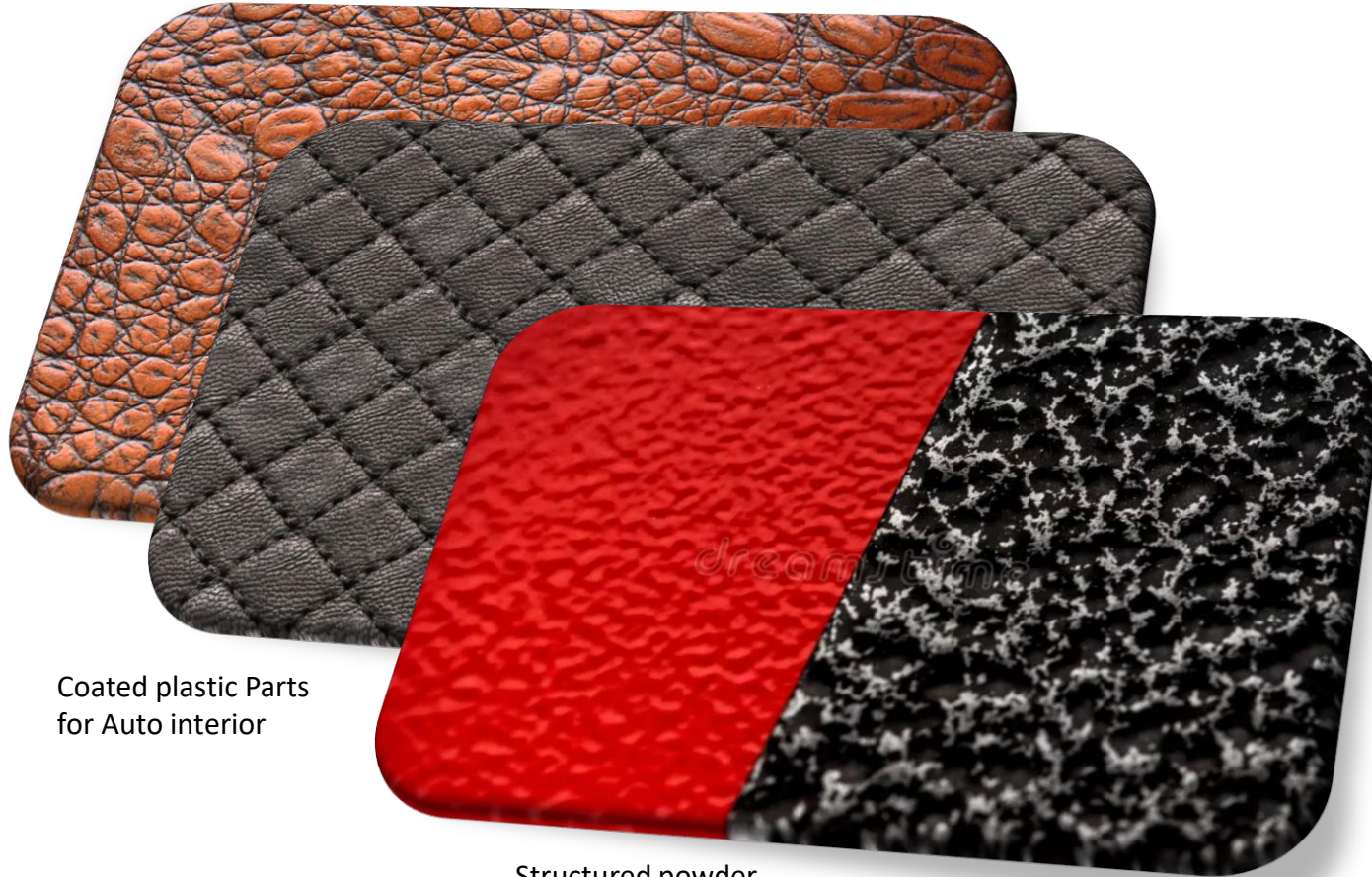
RGB Colour

Colour correct RCB surface image

- Good for spatial colour analysis

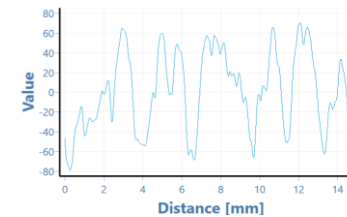
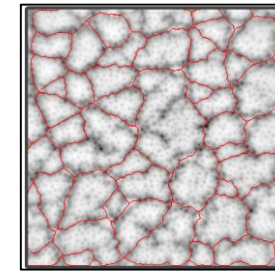
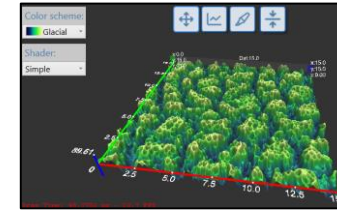
Texture Module- perception measurement for textured

Dyed and Coated Natural Materials



Coated plastic Parts for Auto interior

Structured powder coatings



Cell Size & Amplitude

Size and distribution of identified features

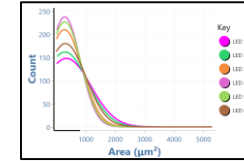
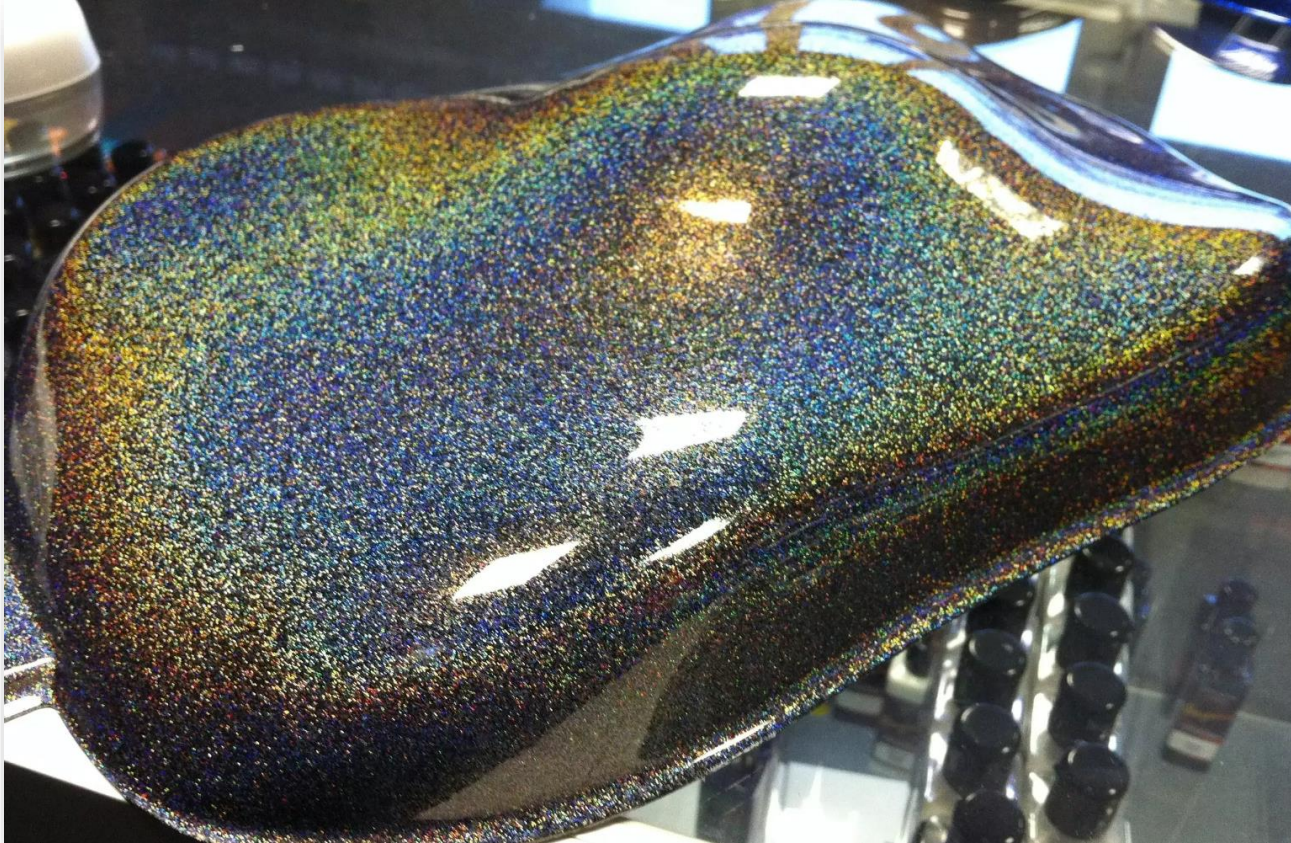
Reflectivity of hills and valleys

Perception of the surface is influenced by glossiness differences

Optical Roughness

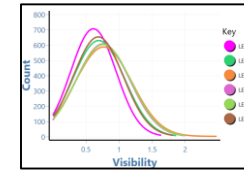
Important factor for tactile “feel”

Sparkle Measurement



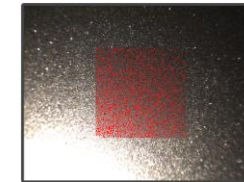
Sparkle Size

Average size of visible elements





Sparkle Intensity

Brightness of sparkle elements



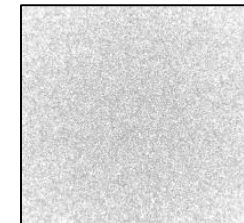
Sparkle Density

Count of visible sparkle elements/area

	SpR ▼	SpG ▼	SpB ▼
	181	171	145

Sparkle Colour

RGB colour of sparkle elements



Graininess

Coarseness of surface in diffuse conditions

Technology Deployment

Parts and Surfaces



Small parts



Wet or Delicate Materials

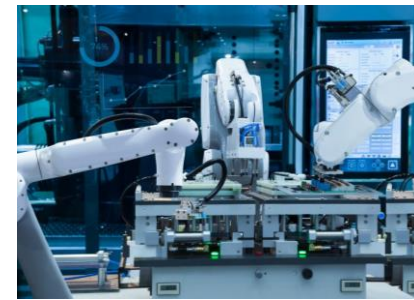


Curved surfaces

Places



Laboratory



Production Line



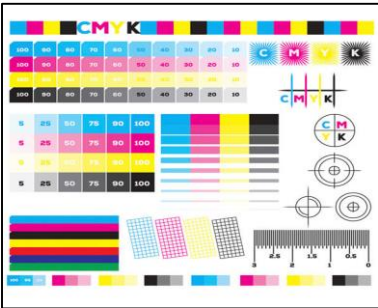
Inspection

What is next for the technology?

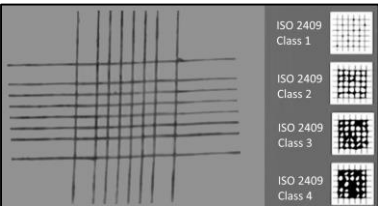
Upcoming Modules



Transmission Appearance



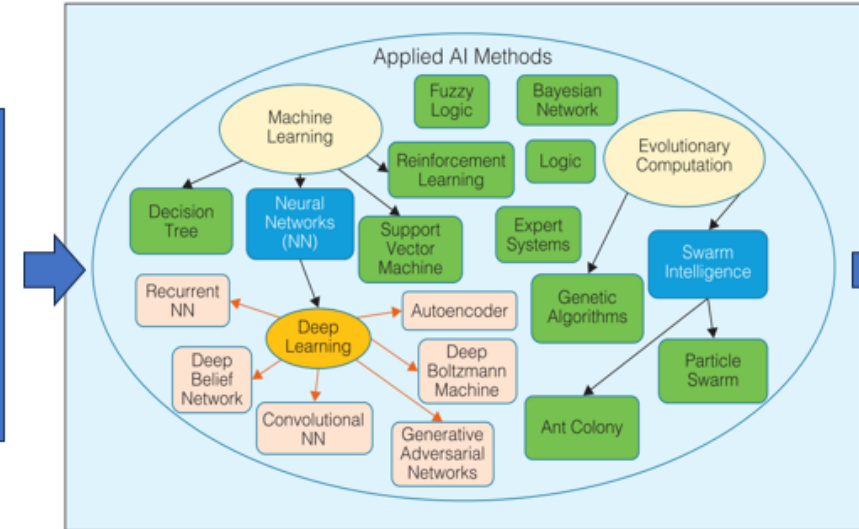
Inks and printing



Coating test modules

AI Integration

Measurement Data
Process Data
Customer Ranking



Improved Quality
Optimised Process
Waste Reduction

Control for your needs

Simple to use tools –
For the age of complexity

sales@rhopointinstruments.com

Connect with us via LinkedIn

[linkedin.com/company/rhopoint-instruments-ltd/](https://www.linkedin.com/company/rhopoint-instruments-ltd/)

