



0:05

GY

BISON'S

8

Pull the trigger to continue

Actual Ball

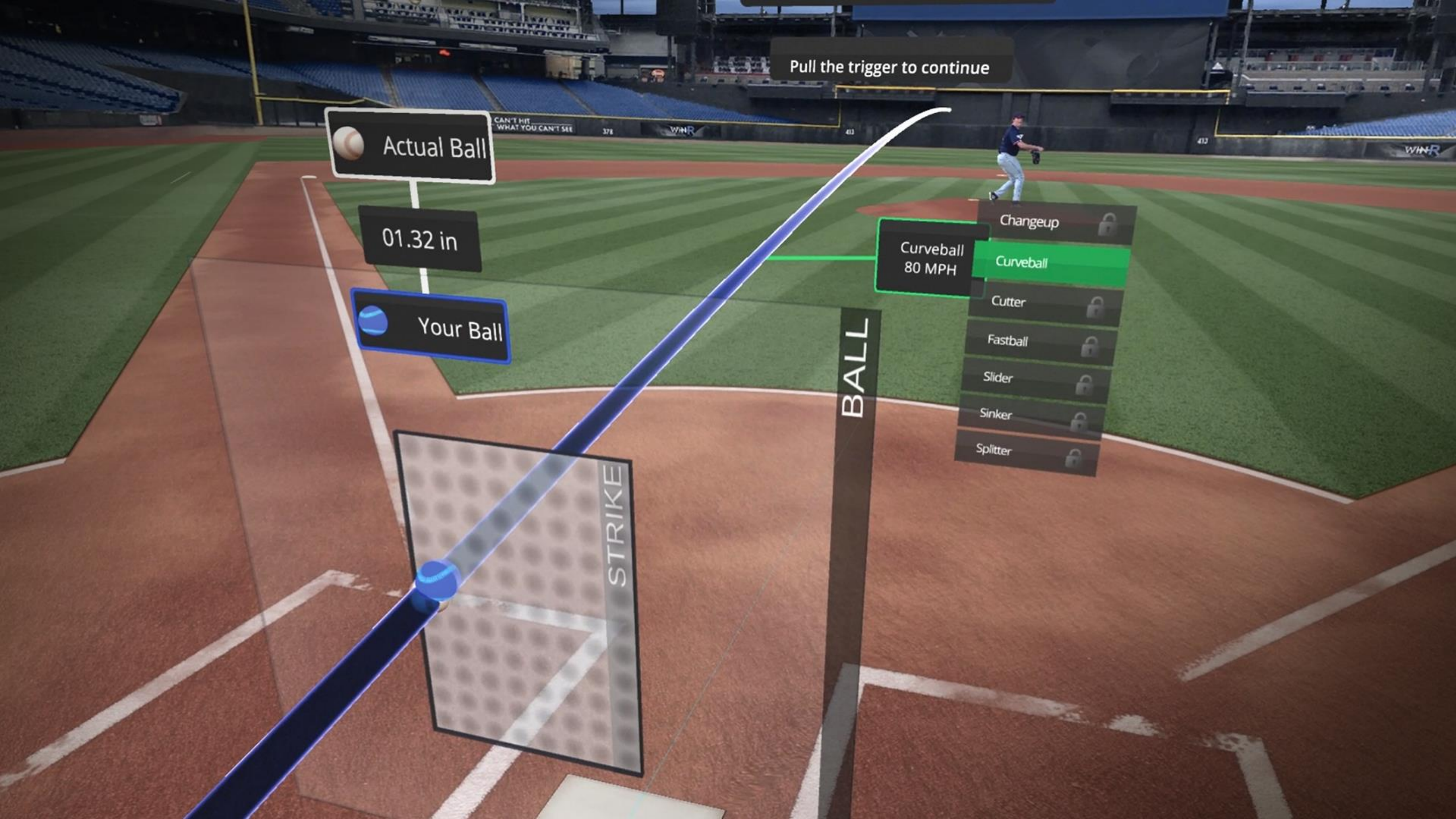
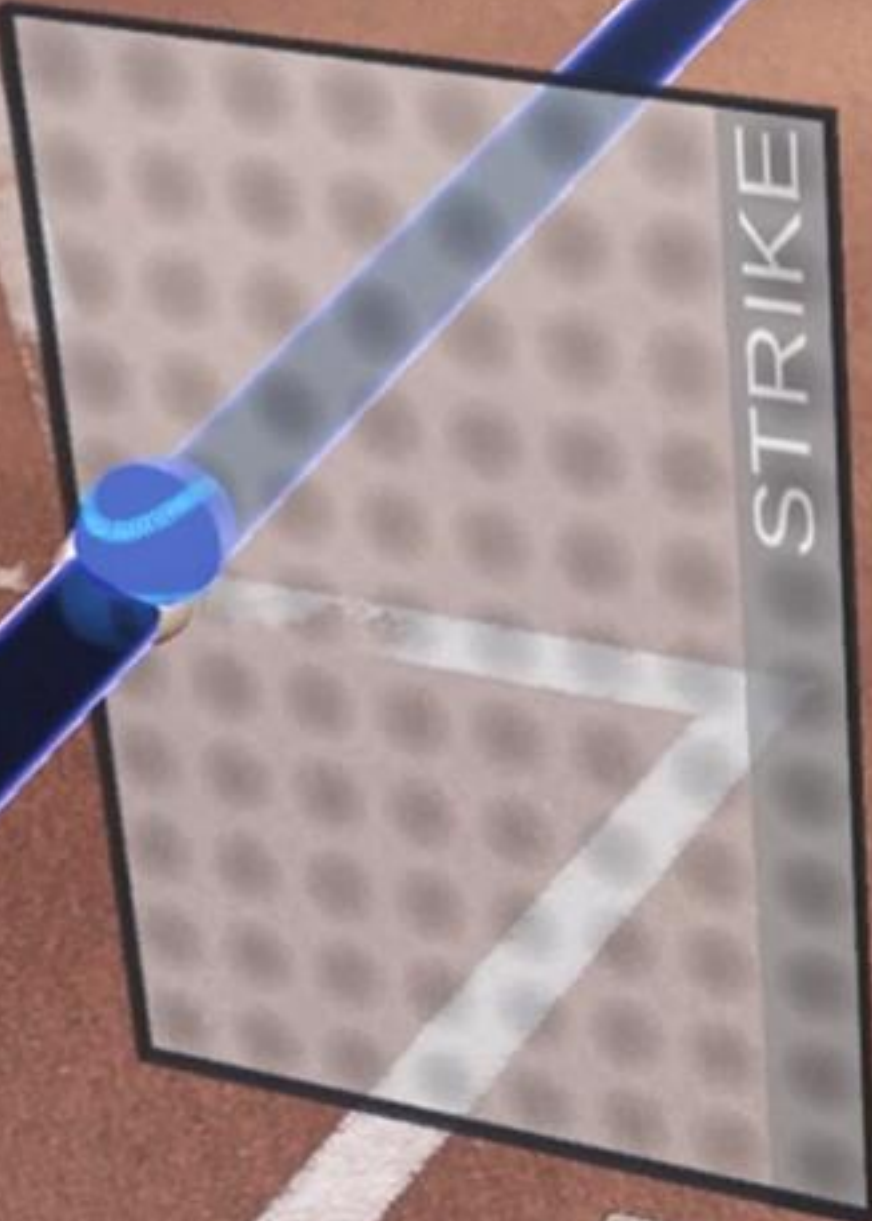
01.32 in

Your Ball

- Changeup
- Curveball
- Cutter
- Fastball
- Slider
- Sinker
- Splitter

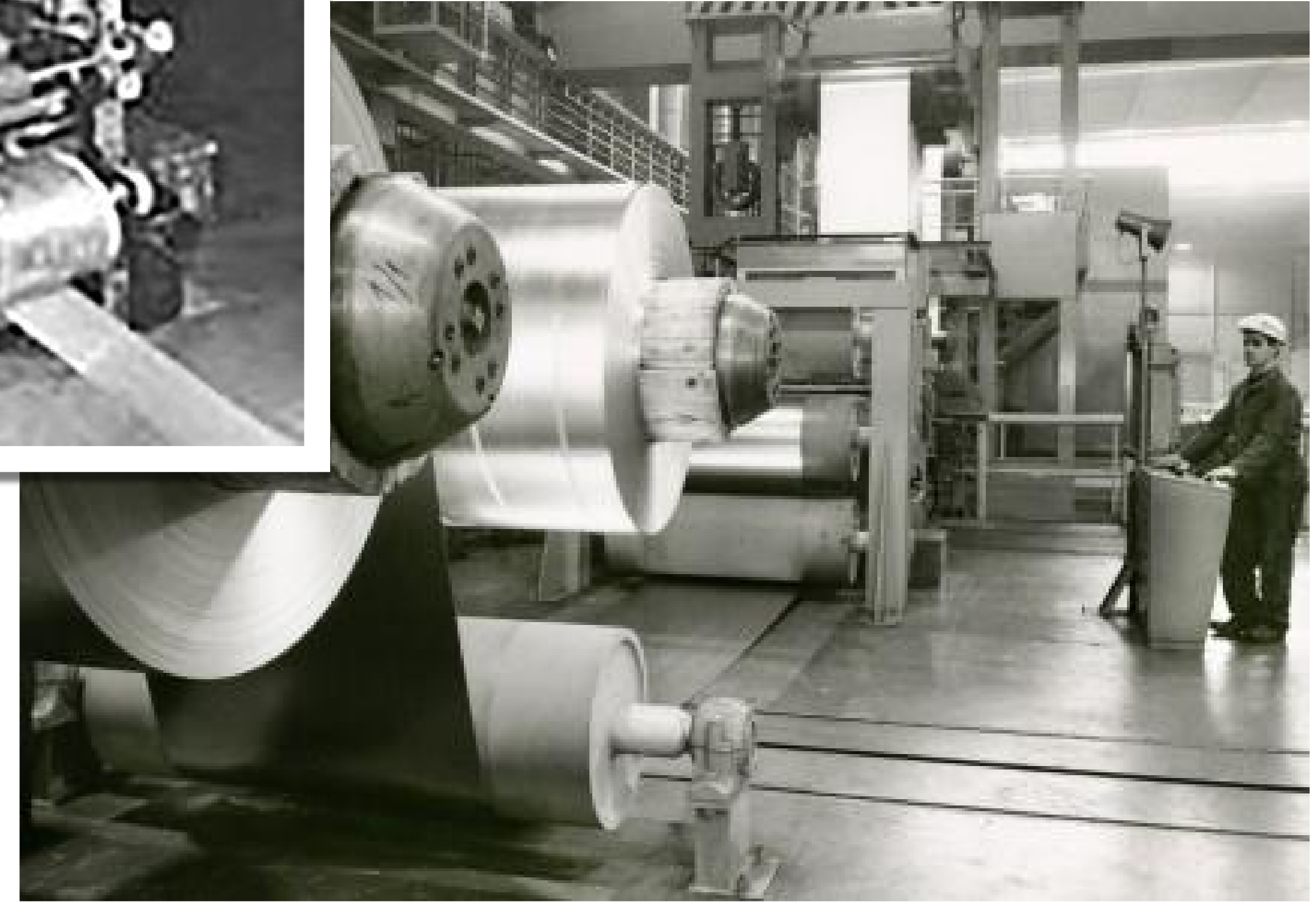
Curveball
80 MPH

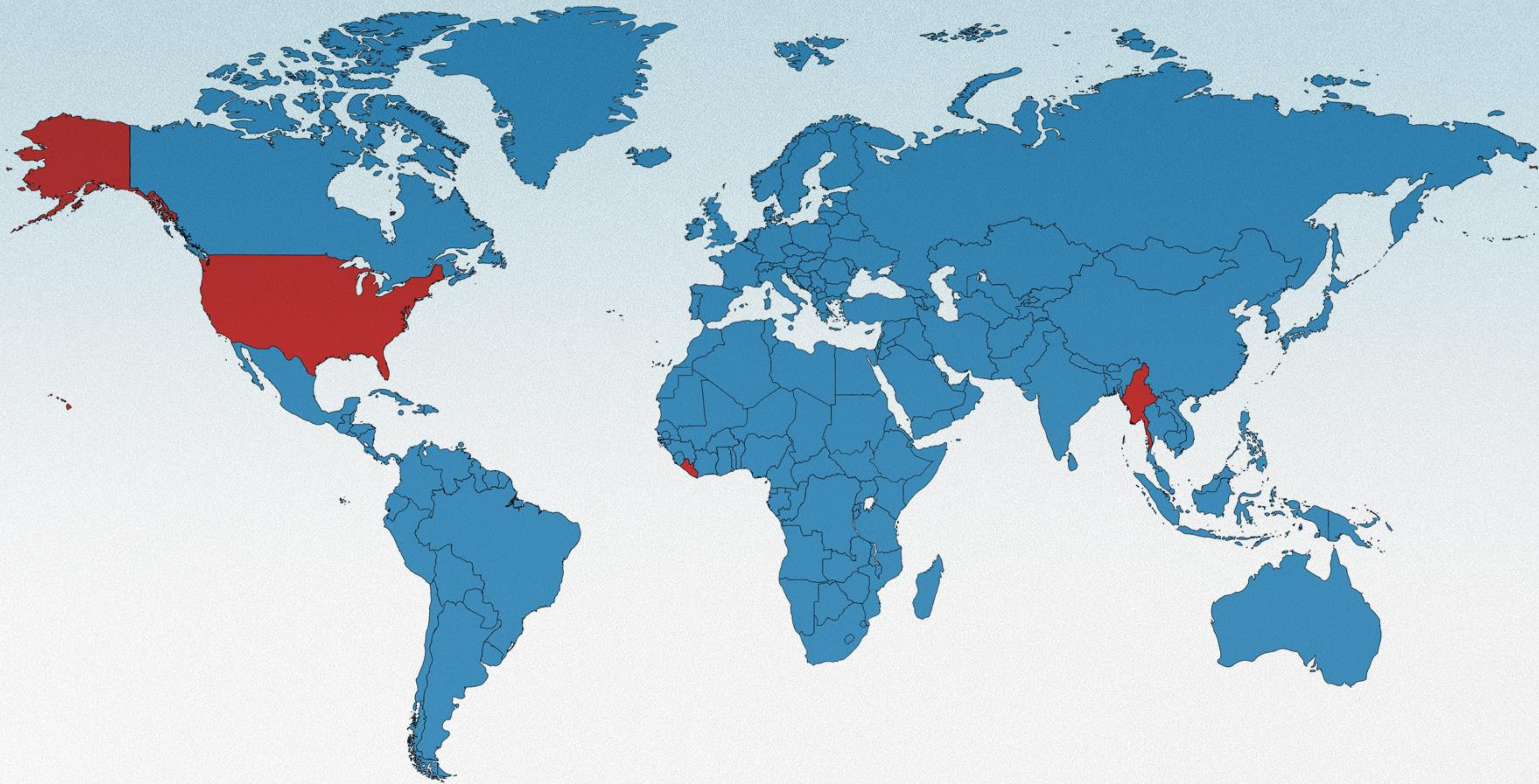
BALL





**The steel industry, including coil coaters,
has painted themselves into a corner.**





Change is hard.

Customers, regulators and the world are demanding more.

Customers

- Customers demand greener, innovative solutions
- Leaders like SDI are setting sustainability benchmarks
- Embracing sustainability ensures market relevance

Regulators

- Stricter regulations and accountability
- Incentives for green innovation and the circular economy
- International, climate-driven policies

Expert Blog

Buy Clean Takes Center Stage at U.S. DOT and Other Agencies

The federal government will prioritize low-carbon procurement across four major materials categories: steel, concrete, asphalt, and flat glass.

September 15, 2022



SHARE THIS PAGE



Both the Biden administration and Congress recognize the importance of investing big in a clean and globally competitive industrial manufacturing base. A cornerstone of that effort is leveraging the federal government's purchasing power to buy cleaner concrete, steel, and other industrial materials to catalyze market transformation. The Biden



ONE EARTH 
ONE CHANCE 

PROFIT!

**HUMAN CHANGE
NOT
CLIMATE CHANGE**

IT'S TIME

There
Planet
B

THE GOVERNMENT

THE GOVT
ACKNOWLEDGE
AND DO IT
TO TRUMP
C P

DAVID
ATTENBOROUGH
COMES ON
HIS OWN

CK
THE
ILL

UM
NO

WE
AN

Innovation is coming.

Let's lead, not follow.

Hi, I'm Bob.



Join the Chorus



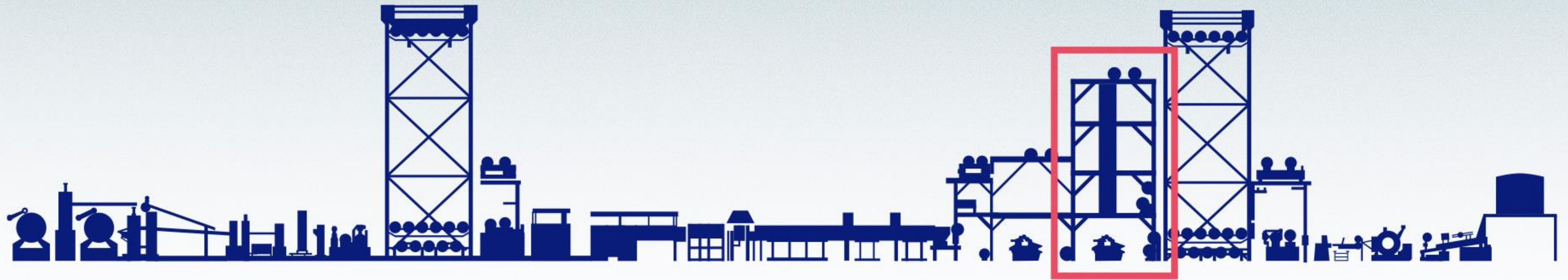
“Business leaders must constantly look for new ways to innovate, because you can't solve many problems with old solutions.”

- Harvard Business School Online, March 08, 2022

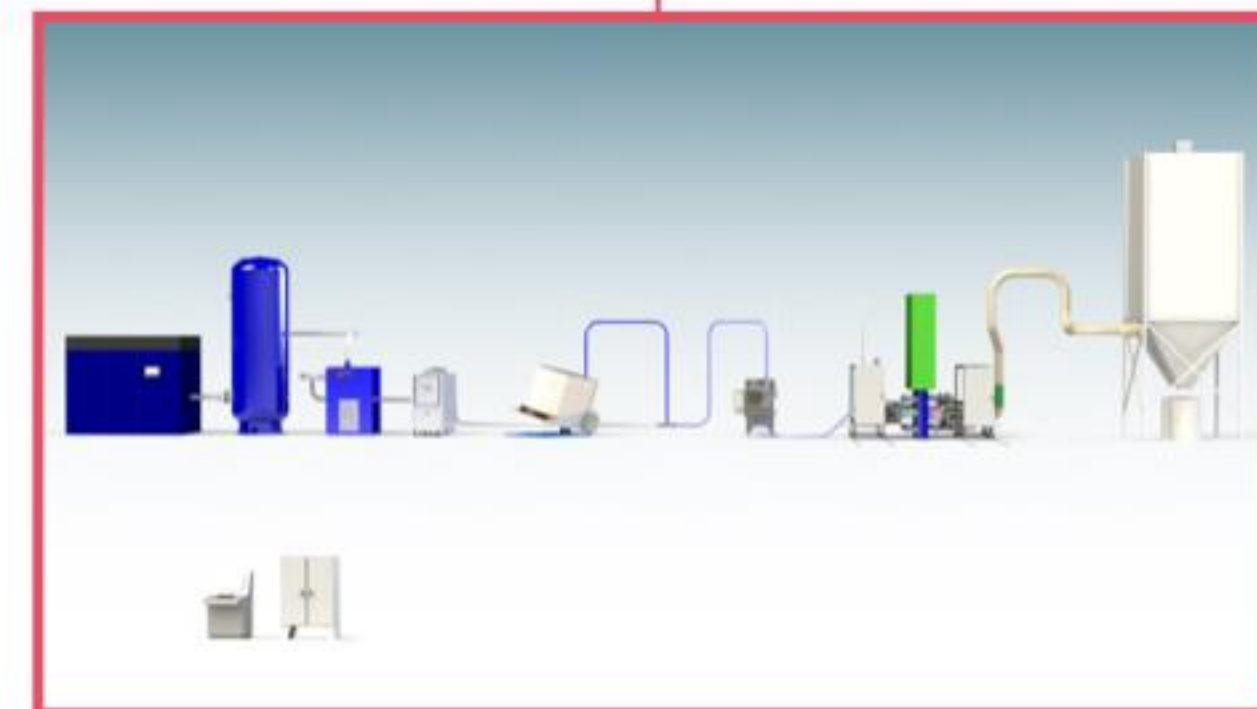
Vertical, Continuous Coil Coating Line (CCCL)



Vertical, Continuous Coil Coating Line (CCCL)



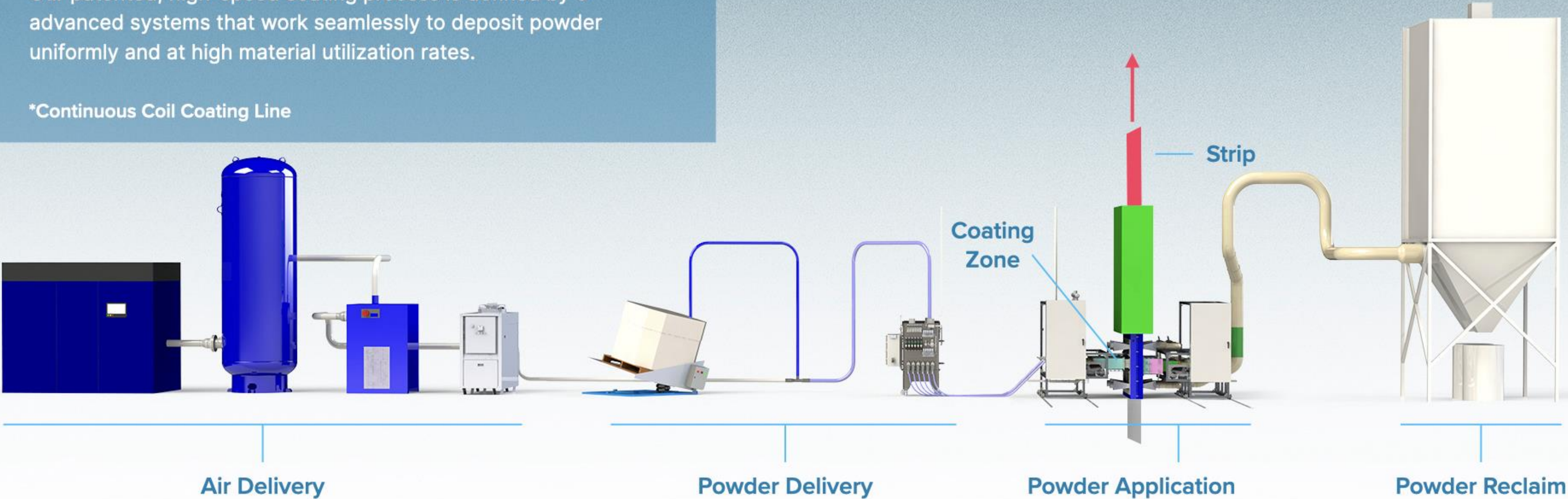
Powder CCCL Equipment



Powder CCCL* Equipment

Our patented, high-speed coating process is defined by 5 advanced systems that work seamlessly to deposit powder uniformly and at high material utilization rates.

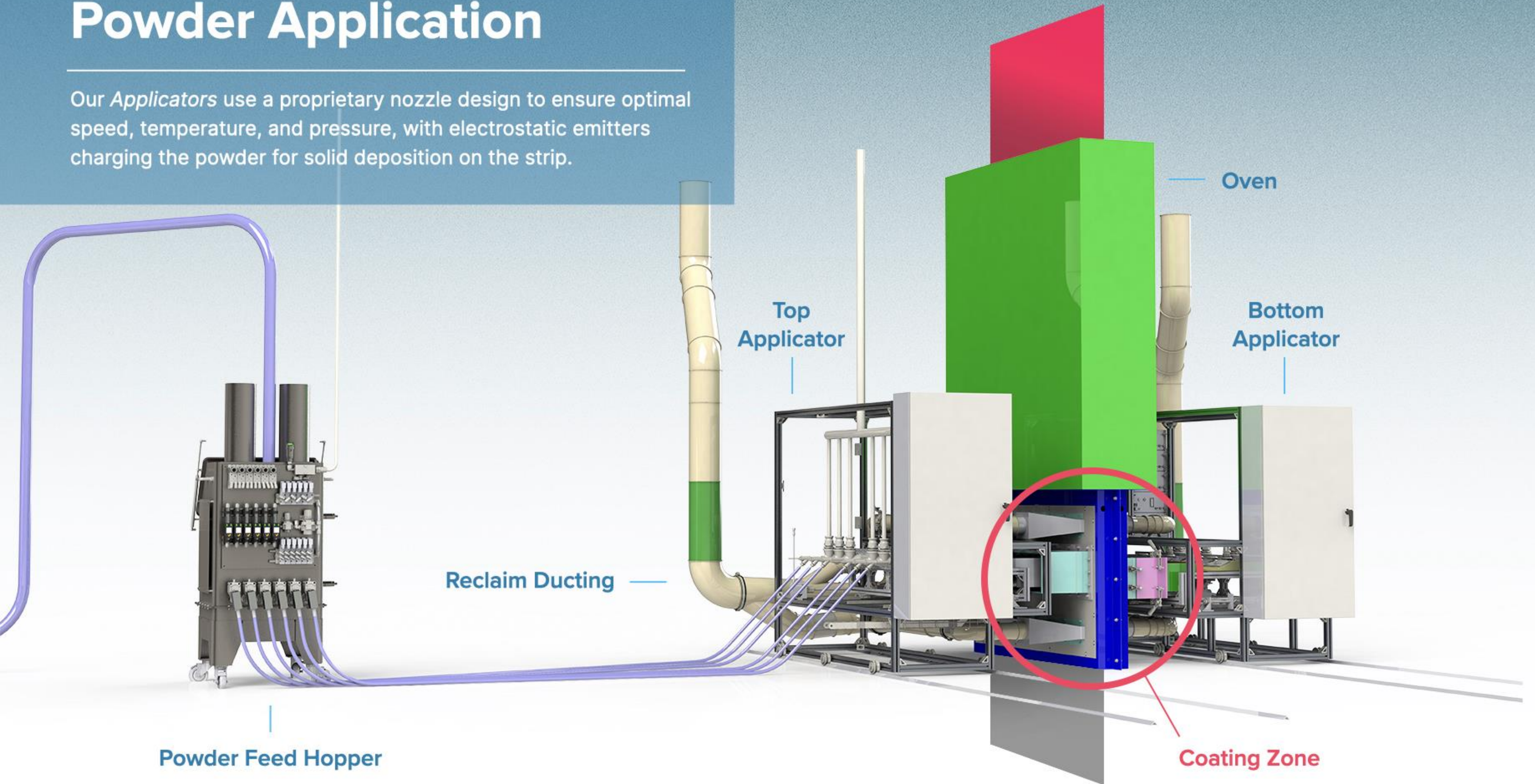
*Continuous Coil Coating Line



PATENT PROTECTED TECHNOLOGY

Powder Application

Our *Applicators* use a proprietary nozzle design to ensure optimal speed, temperature, and pressure, with electrostatic emitters charging the powder for solid deposition on the strip.



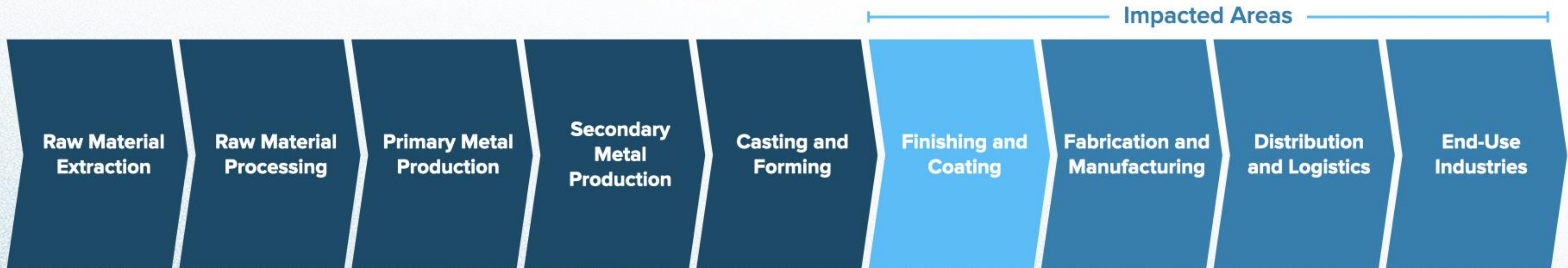




August 2022

Steel and Aluminum Value Chain

The compounded effect of shifting processes like coating to earlier stages in the value chain reduces the need for fieldwork, optimizing logistics, improving quality control, and lowering the overall environmental footprint.



- **Post-Painting Metal/Parts Is Not Efficient**
- **Liquid Paints Have Contributed Significantly to GHG Emissions**

- **Pre-Painting Metal Is Efficient**
- **Powder Coatings are Low/No VOC, No HAPs**

Use Case: 1 mil Polyester Hybrid Powder Coating vs. Water-Based Liquid Coating

Scope 1 Emissions	BAU	Powder CCCL	Unit
Natural Gas Consumption	66,705	0	MMBtu per year
CO ₂ Emissions	3,539	0	MT CO ₂ per year
CH ₄ Emissions	66.7	0	kg CH ₄ per year
NO ₂ Emissions	6.67	0	kg NO ₂ per year
CO₂e Emissions	3,612.37	0	MT CO₂e per year

Scope 2 Emissions	BAU	Powder CCCL	Unit
Electricity Consumption	3,690,327	0	kWh per year
CO ₂ Emissions	1,562	9917	MT CO ₂ per year
CH ₄ Emissions	137.3	871	kg CH ₄ per year
NO ₂ Emissions	20.09	128	kg NO ₂ per year
CO₂e Emissions	1,719.39	10,916	MT CO₂e per year

Scope 3 Emissions	BAU	Powder CCCL	Unit
Upstream - Primer	36,485	0	MT CO ₂ per year
Upstream - Paint	42,004	19281	kg CH ₄ per year
Upstream - Clear Top Coat	0	0	kg NO ₂ per year
CO₂e Emissions	78,489	19,281	MT CO₂e per year

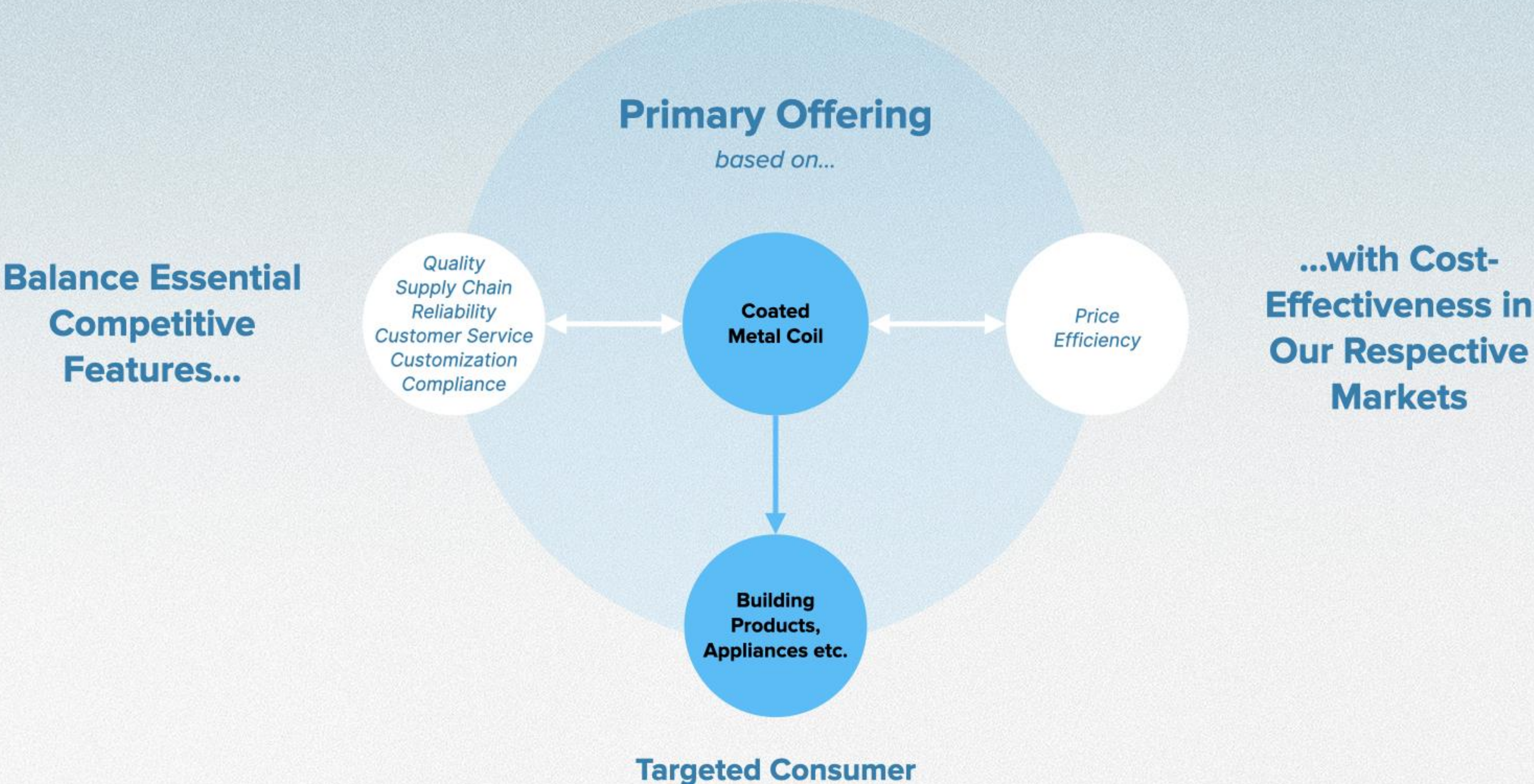
GHG Emissions Summary	BAU	Powder CCCL	Unit
Scope 1 Emissions	3,612.37	0	MT CO ₂ per year
Scope 2 Emissions	1,719.39	10,916	kg CH ₄ per year
Scope 3 Emissions	78,489	19,281	kg NO ₂ per year
Total Emissions	83,820.76	30,197	MT CO₂e per year

DIFFERENCE IN GHG EMISSIONS	53,624	MT CO₂e per year
------------------------------------	---------------	------------------------------------

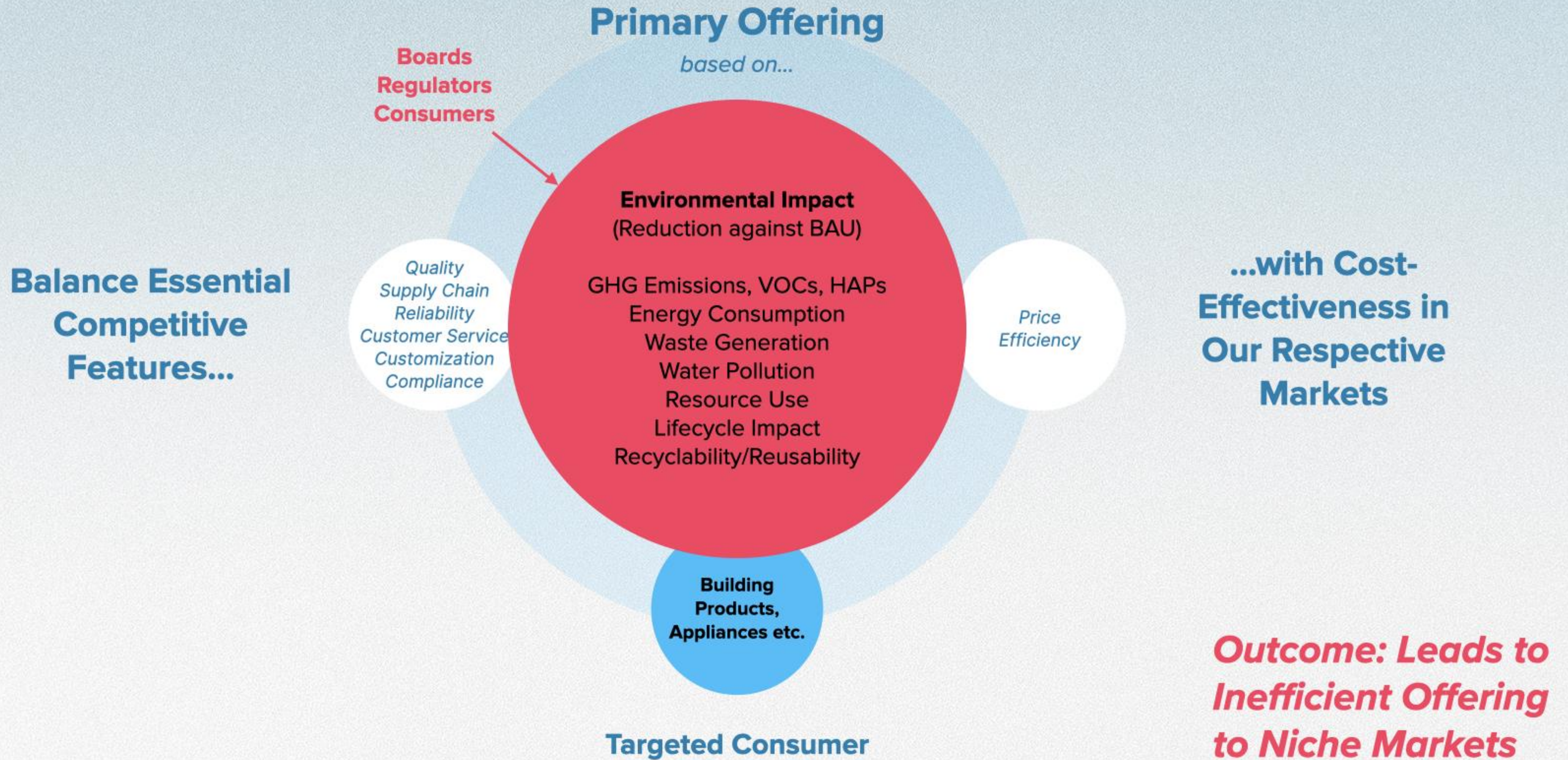
- Powder coating provides significant GHG emissions savings in the upstream supply chain compared to liquid painting.
- 50-100k MT CO₂e per line, depending on coating thickness and properties.
- Powder coating is a single pass operation, further reducing energy use and waste.
- There are no VOCs, no HAPs, and high transfer efficiency and opportunity for reuse.
- There is opportunity to accelerate the adoption of clean technologies with incentives from regulators.

2024 Climate Impact Study Preliminary Results (based on an evolving model; data and projections subject to refinement).

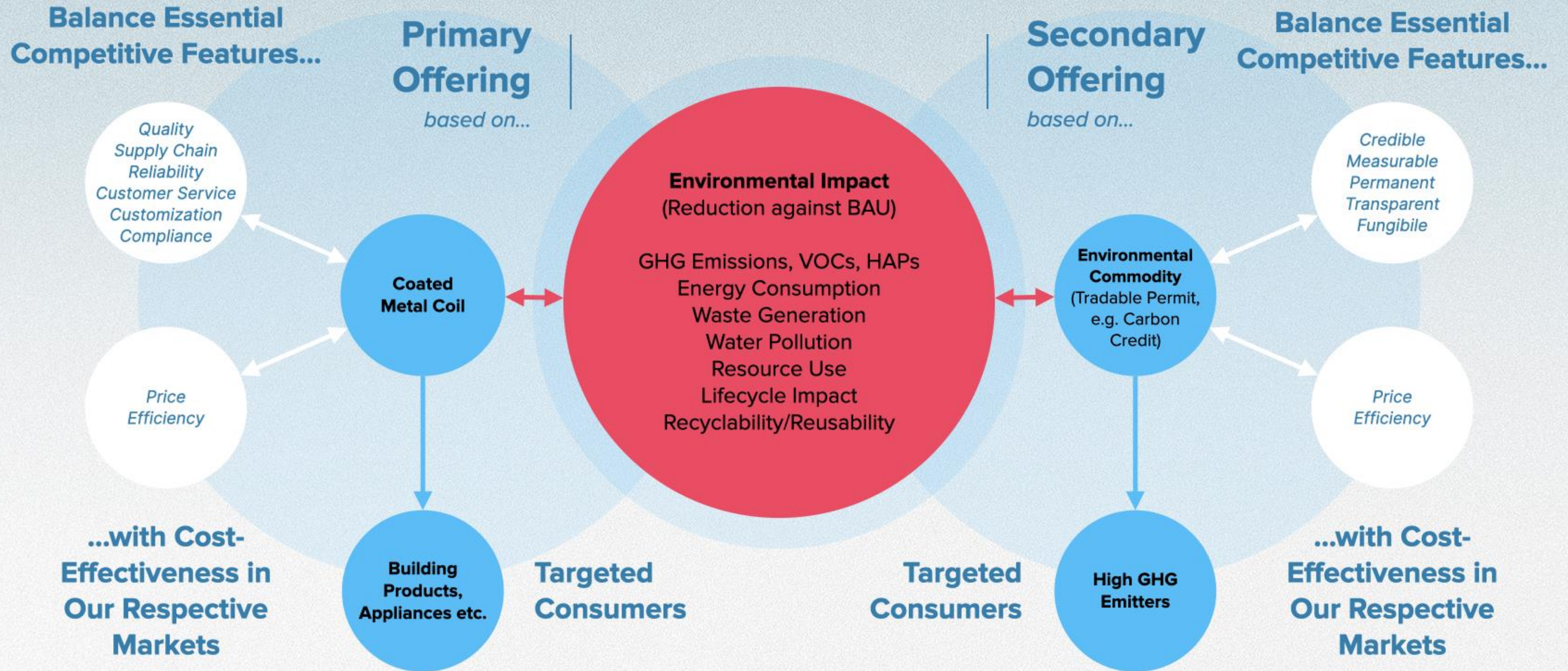
Achieving Net-Zero Carbon Goals Are Difficult



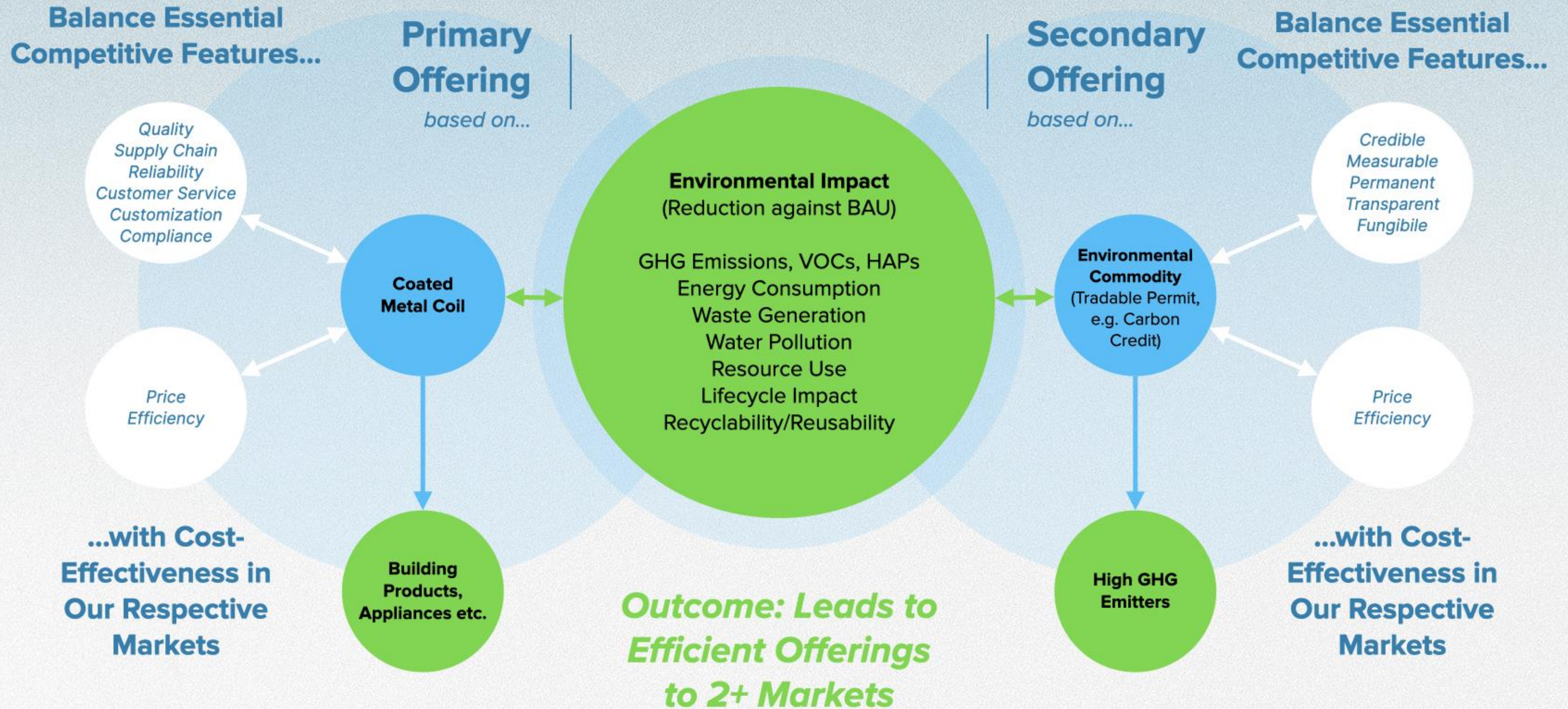
Achieving Net-Zero Carbon Goals Are Difficult



Achieving Net-Zero Carbon Goals Are Absolutely Possible



Achieving Net-Zero Carbon Goals Are Absolutely Possible



**Innovation
is different than evolution.**

**Let's lead, not follow. It's happening now.
Join the chorus.**





Thank You

Robert McShane

Founder & CEO

rjmcshane@powdercoil.com

(219) 242-1534